

# WHAT'S NEW IN

BEST PLACES TO LIVE IN AMERICA



WestChesterDevelopment.com

2Q-2019

## IN THIS ISSUE

[Businesses Key to West Chester's Success](#)

[Community Development Lays Foundation for Modern Growth and Stability](#)

[Ohio Repeats as Runner-up in 2018 Governor's Cup](#)

[Office/Technology Projects](#)

[Industrial Projects](#)

[Commercial Projects](#)

[Coming Soon](#)

[Now Open](#)

[Looking for Space?](#)

[Our Sponsors](#)



## BUSINESSES KEY TO WEST CHESTER'S SUCCESS

West Chester's economic development professionals take special interest in the future success of those who plant business roots in the community. Like any good neighbor, West Chester welcomes the opportunity to assess business needs and connect businesses with the resources they need to prosper.

In the past three years, West Chester tracked more than \$301 million in new capital investment. This new investment accounts for 318 projects totaling nearly 6.2 million square feet of commercial development, combining to create 2,900 new jobs and retaining more than 3,870 jobs in the community.

Responsible business growth remains a hallmark of this community that first gained attention as a suburban community about 30 years ago. West Chester's central location along I-75 and I-275, between Dayton and Cincinnati fuels a local economy that helps "underwrite" the costs of exceptional infrastructure that has defined the community as one of "America's Best Places to Live" and a place where families grow and businesses prosper.

## [Looking for Space?](#)

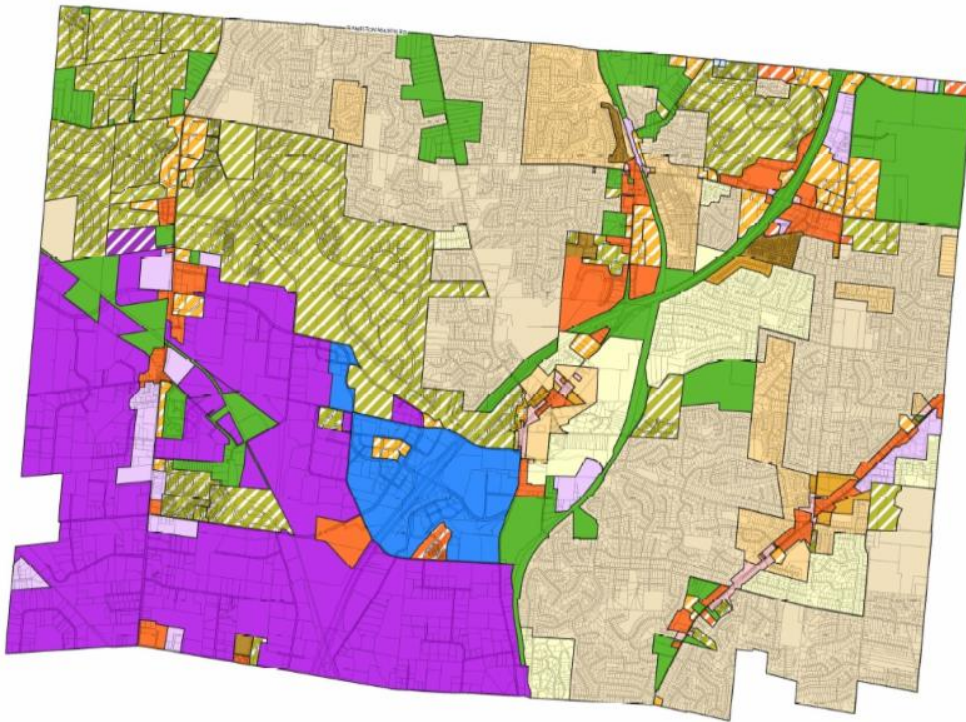


**West Chester ...  
Built With You In  
Mind!**

West Chester is a proven destination for corporate investment. Development opportunities exist

As a business-friendly community, West Chester's economic development professionals are poised to meet individually with business leaders as part of a business retention and expansion visit initiative. Staff aims to visit at least 40 businesses per year to assess business needs and expansion opportunities. Using partner resources, West Chester is able to make connections for our businesses in workforce, training, available property for expansions and more.

If you have questions regarding your existing or potential West Chester business, please contact Cathy Walton, Business Attraction and Expansion Manager for information at (513) 759-7325 or [cwalton@WestChesterOH.org](mailto:cwalton@WestChesterOH.org).



## COMMUNITY DEVELOPMENT SETS FOUNDATION FOR MODERN GROWTH AND STABILITY

The West Chester Zoning Resolution was first adopted in November of 1990 as the community leaders sought to have local oversight of future growth.

The original resolution has been amended 17 times since it was first enacted. These amendments were enacted in reaction to evolving trends and legal requirements.

In 2019, the West Chester Board of Trustees will begin the process to completely overhaul the Zoning Resolution to meet the needs of a still growing community while looking ahead to future trends.

"The original resolution has served West Chester well through unprecedented growth," said West Chester Township Administrator Larry D. Burks. "Now is the time to look even further into our community's future in order to remain competitive, sustainable and marketable. The new document will offer a fresh perspective while preserving those qualities that have made

throughout West Chester with sites of one to 100 acres available. Office, manufacturing, research and development properties with accessible infrastructure, frontage on I-75 or within two miles of an interstate interchange are available.

West Chester's economic development professionals are prepared to find an available property to suit the needs of those seeking to relocate and/or grow in West Chester's no earnings tax, pro-business environment.

Contact Cathy Walton, Business Attraction and Expansion Manager, for personalized assistance at **(513) 759-7325** or email [Cathy](mailto:Cathy@WestChesterOH.org).

## Our Sponsors



[AK Steel](#)

[AstraZeneca](#)

[Bass Pro Outdoor](#)

[World](#)

[ChappCo](#)

[Comcast](#)

[DRT Medical – Morris](#)

[First Financial Bank](#)

[GE Aviation](#)

[Griffin Capital](#)

[KEMBA Credit Union](#)

West Chester one of America's Best Places to Live."

The process to develop a new zoning resolution for the community will begin in May of this year as the Board of Trustees are expected to advertise a Request for Qualifications/Request for Proposal (RFQ/RFP). Through the process, a qualified firm will be identified to take West Chester through this process, which is expected take a full year.

"Critical to the process and a key requirement for a successful applicant will be plenty of opportunity for community input," Mr. Burks said. "It is critical that residents and businesses in the community have a say in the final resolution."

In addition to developing a new zoning resolution, the Township will also seek to make minor changes to the Comprehensive Land Use Plan so that the two documents can work together to manage future growth and development of the community.

For information on the process or to be considered in the RFQ/RFP, please contact West Chester Community Development at 513-777-4214.



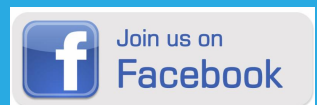
### OHIO REPEATS AS RUNNER-UP IN 2018 GOVERNOR'S CUP

Ohio and Greater Cincinnati earned high marks in Site Selection's Governor's Cup 2018 rankings, which measures economic development growth in relation to a region's available workforce.

[JobsOhio reports that Ohio was named the No. 2](#) overall state for total projects for the fifth consecutive year and the No. 3 state in projects per capita. The recognition makes Ohio, for the second consecutive year, the only state to place in the top three of both categories.

"Companies that locate and grow in Ohio are finding success here thanks to the diversity and advantages the state's communities, regardless of size, offer for a variety of industries," said Dana Saucier, vice president and head of economic development at JobsOhio.

[Main Event](#)  
[Entertainment](#)  
[NorthPoint](#)  
[Development](#)  
[Park National Bank](#)  
[Planes Companies](#)  
[Republic Wire](#)  
[Schumacher Dugan](#)  
[Construction](#)  
[Scott Street Partners](#)  
[Systecon](#)  
[The Streets of West](#)  
[Chester](#)  
[Traditions Building](#)  
[and Development](#)  
[Group](#)  
[West Chester Hospital](#)  
[West Chester-Liberty](#)  
[Chamber Alliance](#)  
[West Chester](#)  
[Township](#)  
[Wetherington Golf and](#)  
[Country Club](#)



[Stay On Top of New](#)  
[Developments](#)



[And according to REDI Cincinnati](#), the Greater Cincinnati region moved up one spot from No. 6 to No. 5 in 2018 for metro areas with a population greater than 1 million. Ohio also ranked second behind Texas in statewide job creation.

"Considering that the Governor's Cup is not a subjective measure, but based on hard project numbers, this award represents the diligence and collaboration we're known for in Greater Cincinnati," said Kimm Lauterbach, President and CEO of the Regional Economic Development Initiative (REDI) Cincinnati.

Site Selection has awarded the Governor's Cup annually since 1988 to the state with the greatest number of new and expanded corporate facilities as tracked by Conway Data Inc.'s New Plant Database.

In 2018, West Chester tracked more than \$81.5 million in new capital investment. This new investment accounts for 88 projects totaling nearly 1.8 million square feet of commercial development, combining to create or retain more than 1,200 jobs in the community.

For a complete list of Site Selection 2018 honorees, visit [SiteSelection.com](http://SiteSelection.com).

## Office/Technology Projects



**Pilot Chemical at Centre Pointe Office Park**

**Pilot Chemical**, a global specialty chemical company, announced it will relocate its corporate headquarters to a 35,805 square-foot Class A office space at 9075 Centre Pointe Drive in Centre Pointe Office Park. Pilot Chemical specializes in high quality products and services to the disinfecting, sanitizing, cleaning, metalworking, lubricants, oil field and emulsion polymerization industries. Pilot Chemical is an industry leader in chemical innovation and safety, and is certified under the American Chemistry Council's Responsible Care program. [Pilot Chemical](#)



**Harvest Financial Advisors**

**Harvest Financial Advisors**, specializing in fee-only, wealth management services, announced it will expand and relocate its existing West Chester operations to a new 8,344 square-foot office building it will construct at 8836 Cincinnati Dayton Road in Olde West Chester. Harvest Financial Advisors is independently-owned and offers investment management, retirement planning, estate planning and more. [Harvest Financial Advisors](#)



**Arconic**

**Arconic**, solving complex engineering challenges to transform the way we fly, drive build and power, leased a 3,300 square-foot Class A office space at 9032 Union Centre Boulevard in Union Centre Office Park. Arconic delivers quality products that shape the aerospace, automotive, transportation, energy, defense, space, building and construction industries through the ingenuity of its people and cutting-edge advanced manufacturing techniques it develops. [Arconic](#)



**RE/MAX Preferred Group at Union Centre Office Park**

**RE/MAX Preferred Group**, a full-service realty office specializing in a high level of customer service, announced a 1,100 square-foot expansion to its existing Class A office space at 9032 Union Centre Boulevard in Union Centre Office Park. The RE/MAX Preferred Group was founded in 1998 and has grown to include 10 offices in Greater Cincinnati. RE/MAX Preferred Group is licensed to list and sell residential, commercial, new construction and land for Ohio, Kentucky and Indiana customers.

[www.preferredgrouprealtors.com](http://www.preferredgrouprealtors.com)

**Dauntless Discovery**, a global leader in providing eDiscovery services to the legal profession, opened a 5,363 square-foot office at 9050 Centre Pointe Drive in the Centre Pointe Office Park. Dauntless Discovery offers its clients the same high quality work product and customer service they are accustomed to receiving from top-tier law firms, at a significantly lower price. The management team of Dauntless Discovery has more than 100 years of combined experienced providing discovery services for the world's top law firms and corporations. [Dauntless Discovery](#)



**CenturyLink**

**CenturyLink**, global telecommunications services provider with customers in more than 60 countries, leased a 9,510 square-foot facility at 9367 Allen



Road. CenturyLink offers services to residential and commercial customers ranging from managed IT, hosting, cyber security, high-speed Internet, TV, voice and more. [CenturyLink](#)

## Medical Projects



**Advanced Therapy Center at Chesterwood Village**

**Advanced Therapy Center at Chesterwood Village**, a new post-hospital rehabilitation center, will open a 110,000 square-foot medical facility at 7924 Chesterwood Boulevard off Tylersville Road. The \$22 million Advanced Therapy Center will house 75 patient rehabilitation suites and 50 long-term nursing suites. The facility equipment will include a HydroWorx pool, underwater treadmills, cyber cycles that use virtual reality and more for the inpatient, outpatient and community programs it will offer. The Advanced Therapy Center will celebrate its grand opening on April 11th. [Advanced Therapy Center at Chesterwood Village](#)



**Focal Pointe Eye Care**

**Focal Pointe Eye Care**, a family-owned and operated full-service eye care provider, began construction on a new 5,675 square-foot building at 7227 Liberty Way in West Chester where it will expand and relocate its existing township business. Focal Pointe Eye Care opened its doors in 2008 to provide a family-friendly facility where patients of all ages could receive all of the eye care services they needed under one roof. Focal Pointe Eye Care utilizes the most up-to-date technology to identify and correct potential vision loss as early as possible. Focal Pointe Eye Care's new building is slated for completion mid-summer 2019. [Focal Pointe Eye Care](#)



**CVS Pharmacy Specialty Services**

**CVS Pharmacy Specialty Services**, specializing in medications for chronic, genetic and rare conditions, opened a 3,540 square-foot medical facility at 10160 International Boulevard. CVS Specialty Pharmacy provides services and education for patients who require treatment for complex medical conditions. [CVS Pharmacy Specialty Services](#)



**Athletico Physical Therapy**

**Athletico Physical Therapy**, a leading provider of orthopedic rehabilitation services, announced it will relocate and expand its existing West Chester medical office to a 2,004 square-foot facility at 7592 Cox Lane near West Chester Hospital. Athletic Physical Therapy offers physical therapy, occupational therapy, sports medicine, work rehabilitation and more. [Athletico Physical Therapy](#)

## Industrial Projects





**Trane**

**Trane**, a world leader in heating, ventilation and air conditioning systems, services and solutions, leased a 47,635 square-foot facility at 382 Circle Freeway Drive off Crescentville Road. Trane, a brand of Ingersoll Rand, provides innovative solutions that optimize indoor environments through a broad portfolio of energy efficient HVAC systems, building, contracting and energy services, parts support and advanced controls for residential and commercial buildings. [Trane](#)



**Flint Group**

**Flint Group**, dedicated to bringing color and function to the printing and packaging products that consumers touch, see and use each day, opened a 41,958 square-foot facility at 8660 Jacquemin Drive in the Jacquemin Logistics Center off Union Centre Boulevard. Flint Group offers a product portfolio spanning inks, blankets, pressroom chemistry, flexographic plates and sleeves, consumables, colorants and digital printing to customers around the world. [Flint Group](#)



**Airtron**

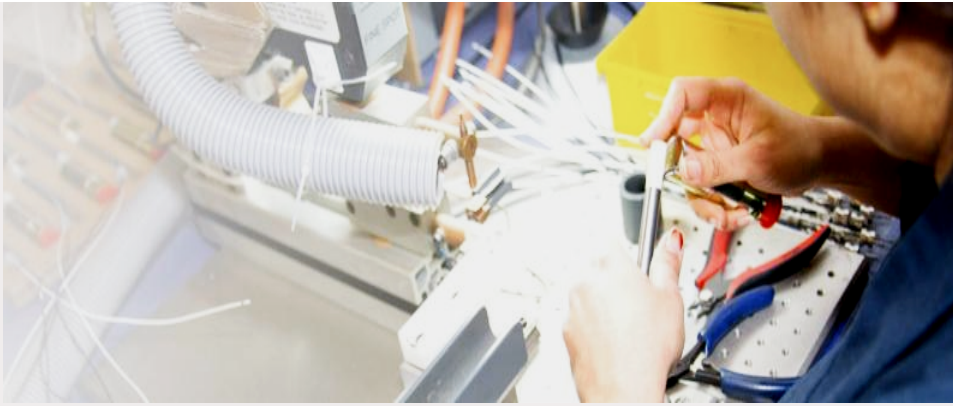
**Airtron**, residential and commercial heating and air conditioning specialists, relocated and expanded its existing West Chester operations to a 40,967 square-foot facility at 5122 Rialto Road. The HVAC experts at Airtron have been specializing in furnace and AC repairs and installations for more than 30 years. [Airtron](#)



**Full Range Rehab**

**Full Range Rehab**, manufacturers of EZ Stretch therapeutic devices, announced it will expand and relocate its existing West Chester business to a 5,383 square-foot facility at 9010 Goldpark Drive off Port Union Road. Full Range Rehab specializes in EZ Stretch, an in-home, mechanical, over-pressure therapy device recommended by orthopedic surgeons and physical therapists for the purpose of helping patients regain range of motion in their knee joints. [Full Range Rehab](#)





**Powersonic Industries**

**Powersonic Industries**, a global manufacturer of custom cable assemblies, wiring harnesses and electro-mechanical assemblies, relocated to a 36,480 square-foot facility at 5406 Spellmire Drive off International Boulevard. [Powersonic Industries](#)



**American Performance Coatings**

**American Performance Coatings**, specializing in powder coat applications, high temperature ceramic coatings and Cerakote, opened a 1,340 square-foot facility at 8645 Cincinnati Columbus Road in West Chester Office Park. American Performance Coatings has access to more than 7,000 colors and also offers media blasting services, sandblasting and in-house or mobile dustless blasting. [American Performance Coatings](#)

## Commercial Projects





**Animal Hospital of West Chester**

**Animal Hospital of West Chester**, dedicated to improving the welfare of your family pets, announced it will construct a new 3,276 square-foot facility at its existing location at 9335 Cincinnati Columbus Road/SR 42. Animal Hospital of West Chester offers compassionate personalized pet care in order to protect, cure and care for pets through all stages of their lives. [Animal Hospital of West Chester](#)



**Domino's**

**Domino's**, an American pizza restaurant chain founded in 1960, announced it will expand and relocate its existing restaurant to a new 1,690 square-foot building at 9157 Cincinnati Columbus Road/SR42 just north of Cox Road near Dairy Queen. The new Domino's location will feature a drive thru window. [Domino's](#)



**Enterprise Rent-A-Car**

**Enterprise Rent-A-Car**, a recognized worldwide leader in the car rental industry, announced it will open a 1,451 square-foot office at 8770 Union Centre Boulevard at Lakota Drive West. Enterprise Rent-A-Car offers daily rentals for private and business use as well as replacement vehicles for the insurance sector. [Enterprise Rent-A-Car](#)



**Mi Burrito Mexico Grill**

**Mi Burrito Mexico Grill**, specializing in authentic Mexican cuisine, announced it will relocate its existing West Chester restaurant to a 2,704 square-foot facility at 4854 Union Centre Pavilion Drive in the Union Centre Pavilion at Princeton Glendale Road/SR 747 and Union Centre Boulevard. Mi Burrito Mexican Grill is known for its modern interpretation of classic dishes and only using high quality fresh ingredients. [Mi Burrito Mexico Grill](#)





**Fleet Feet Cincinnati**

**Fleet Feet Cincinnati**, a locally-owned and operated business specializing in athletic shoes, apparel and accessories geared toward runners, announced it will open a 1,274 square-foot store at 7661 Voice of America Centre Drive in the VOA Shopping Centre off Cox Road. Fleet Feet Cincinnati is passionate and committed to powering the health of its community by being its resource for running, walking and general fitness needs. [Fleet Feet Cincinnati](#)



**Craft Cream Works**

**Craft Cream Works**, a new locally-owned ice cream shop, announced it will open a 1,311 square-foot store at 7736 Dudley Drive in Tylersville Farm near LA Fitness. Craft Cream Works will offer 20 flavors of premium house-made, hand-dipped ice creams, boba teas and coffees. [Craft Cream Works](#)

**REM Ohio**, providing a variety of programs and services to people with special needs, opened a 5,498 square-foot facility at 4845 Smith Road. REM Ohio also assists adults facing employment barriers to promote independence, skill development and growth in the community. [REM Ohio](#)





**REVitalize**

**REVitalize**, a new smoothie and juice bar, opened a 1,400 square-foot health and wellness store at 8095 Beckett Center Drive off Princeton Glendale Road/SR 747. REVitalize also offers weight loss supplements, meal replacements, coaching, teas and more. REVitalize's sister company REVolution on Kingsgate Way in West Chester will remain open. [REVitalize](#)



**Avalon Nail Lounge**

**Avalon Nail Lounge**, a full service nail salon and spa, opened a 2,409 square-foot salon at 9439 Civic Centre Boulevard in the Streets of West Chester off Union Centre Boulevard. [Avalon Nail Lounge](#)



**Grainworks Brewing Company**

**Grainworks Brewing Company**, local microbrewery and taproom, announced a 9,100 square-foot expansion to its existing brewing company at 7790 Service Center Drive off Cox Road. Grainworks Brewing Company's spacious taproom can accommodate private parties, host corporate events, birthday parties and more. [Grainworks Brewing Company](#)



**Hans White Tiger Taekwondo**

**Hans White Tiger Taekwondo**, providing a top martial arts experience that empowers children, teens and adults, opened a 3,343 square-foot fitness facility at 8177 Princeton Glendale Road/SR 747 just north of Smith Road. At Hans White Tiger Taekwondo, students are taught important leadership and communication skills in a fun, active learning environment to challenge them to push themselves to reach their full potential. [Hans White Tiger Taekwondo](#)





**Pinot's Palette**

**Pinot's Palette**, a paint and sip studio offering painting classes and more, opened a 2,840 square-foot facility at 7334 Tylers Corner Drive off Tylersville Road. Paint and sip events combine social drinking and painting for guests 21 and older. Pinot's Palette also offers space for private events, children's parties and more. [Pinot's Palette](#)



**Bambu Cincinnati**

**Bambu Cincinnati**, offering exotic dessert drinks, smoothies, teas and bobas made with fresh ingredients, announced it will open a 1,811 square-foot shop at 7844 Kingland Drive near Tylersville Road. [Bambu Cincinnati](#)





**Sleep Number**

**Sleep Number**, a leader in sleep innovation, announced it will open a 4,503 square-foot store at 7612 Trailside Drive off Tylers Place Boulevard in Wetherington Pointe near Cabelas. Sleep Number provides consumers with individualized sleep solutions through its complete line of Sleep Number 360 smart beds and bedding that allow for adjustable comfort and biometric sleep tracking. [Sleep Number](#)



**Club Pilates West Chester**

**Club Pilates West Chester**, a new Pilates studio offering more than just low-impact, full-body workouts, opened a 1,466 square-foot studio at 7554 Voice of America Centre Drive off Cox and Tylersville roads. Club Pilates West Chester has a full range of class offerings that challenge your mind as well as your body. [Club Pilates West Chester](#)

## COMING SOON

- [Aloft Hotels](#)
- [Hampton Inn and Suites](#)
- [United Dairy Farmers](#)
- [Ambiance Nail Spa \(Crossings of Beckett\)](#)
- [SuperCuts \(Crossings of Beckett\)](#)
- [Craft Cream Works](#)
- [Domino's](#)
- [Bambu Cincinnati](#)



## NOW OPEN

- [Kroger Marketplace](#)
- [PetPeople \(Crossings of Beckett\)](#)
- [REVitalize](#)
- [Avalon Nail Lounge](#)
- [Club Pilates of West Chester](#)
- [Hans White Tiger Taekwondo](#)
- [Pinot's Palette](#)



West Chester Township | [veldridge@westchesteroh.org](mailto:veldridge@westchesteroh.org)  
West Chester Development  
9577 Beckett Road, Suite 100  
West Chester, OH 45069

[Join Our Mailing List!](#)

Copyright West Chester Development Council

Copyright © 2018. All Rights Reserved.

West Chester Township, 9577 Beckett Road, Suite 100, West Chester, OH 45069

[SafeUnsubscribe™ {recipient's email}](#)

[Forward this email](#) | [Update Profile](#) | [About our service provider](#)

Sent by [veldridge@westchesteroh.org](mailto:veldridge@westchesteroh.org) in collaboration with